
SLOT 34

Rover Mini Italian Job

1993 Rover Mini Italian Job Edition in red 1.3l 94k on clock.

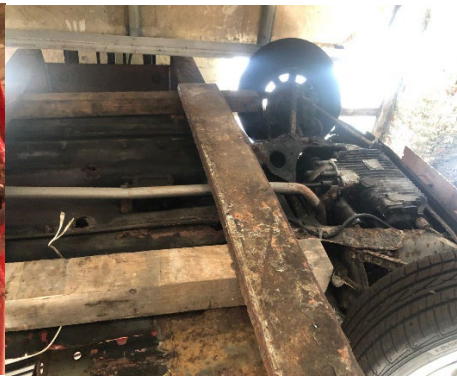
COMPLETE RUNNING CAR

This vehicle has been in dry storage for the past 9 years and V5C present

BAD points:

Needs some welding





With the larger Metro being redesigned in 1990 to take the new K-Series engine, the Mini became the sole recipient of the classic A-Series engine with transmission-in-sump layout.

The engine mounting points were moved forward to take 1275-cc power units, and includes the later Horizontal Integral Float version of the SU carb, and also the single-point fuel-injection version, which came out in November 1991.

The 998-cc power units were discontinued. Early, carburetted Coopers had a catalytic converter and produce 45 kW (60 hp; 61 PS) at 5500 rpm.

Power crept up to 46 kW (62 hp; 63 PS) at 5700 rpm for the fuel injected model. An internal bonnet release was fitted from 1992. By 1991, the Cooper represented forty percent of Mini sales in the home market; the main export market was Japan.

Production ended in August 1996 as the Mark VII replaced it.