
SLOT 2

Ford Sierra XR4x4i

**1991 Ford Sierra XR4x4i 2.9L V6 BOA 4wd 5dr in black with just
52k on the clock**

COMPLETE RUNNING CAR

**This car is in good original condition with lots of upgrades
including FULL Recaro interior.**

**This vehicle has been in dry storage for the last 3 Years. V5c
present**

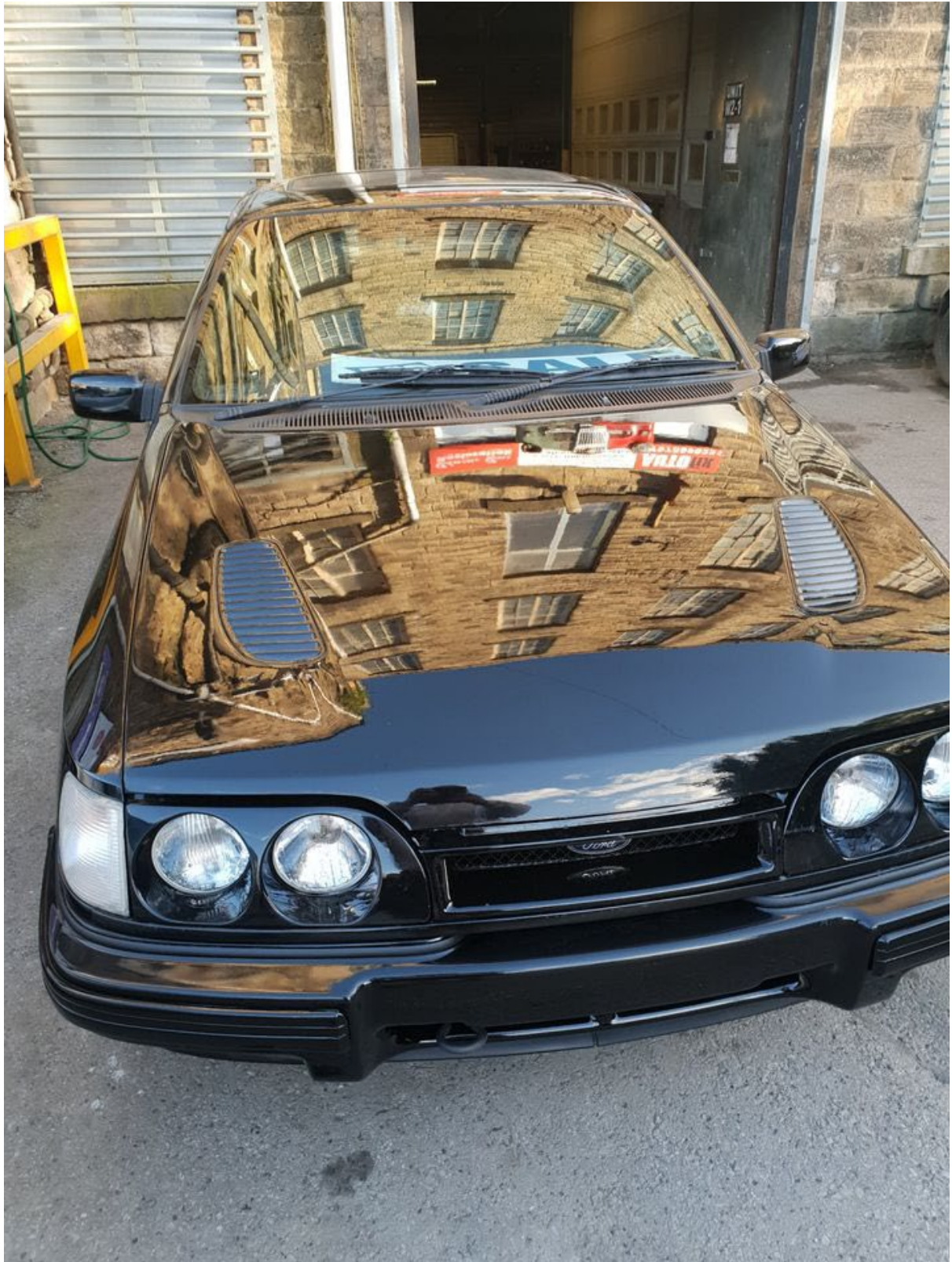






















The XR4x4 I was a derivative of the XR4i having two viscous differentials with two-thirds of the being power sent to the rear wheels, the car also received unique alloys.

The 4x4 drive allowed for an extra margin of safety on slick or snowy roads, ideal for mountainous areas of Europe.

In 1985 the XR4i was replaced by the XR4x4, which was based on the five-door hatchback, had four-wheel drive and was powered by the same 2.8 L V6 engine but wasn't equipped with the bi-plane rear spoiler. Only a very limited number of three-door XR4x4's have been built.

By the end of its production in 1990, 23,540 had been produced. From 1990 to 1993 the XR4x4 was available with both the revised 2.9 EFi and 2.0 DOHC EFi engines.

The XR4i also made a reappearance (as a badging exercise) in 5-door form but with the DOHC 2.0 engine instead of the V6.

